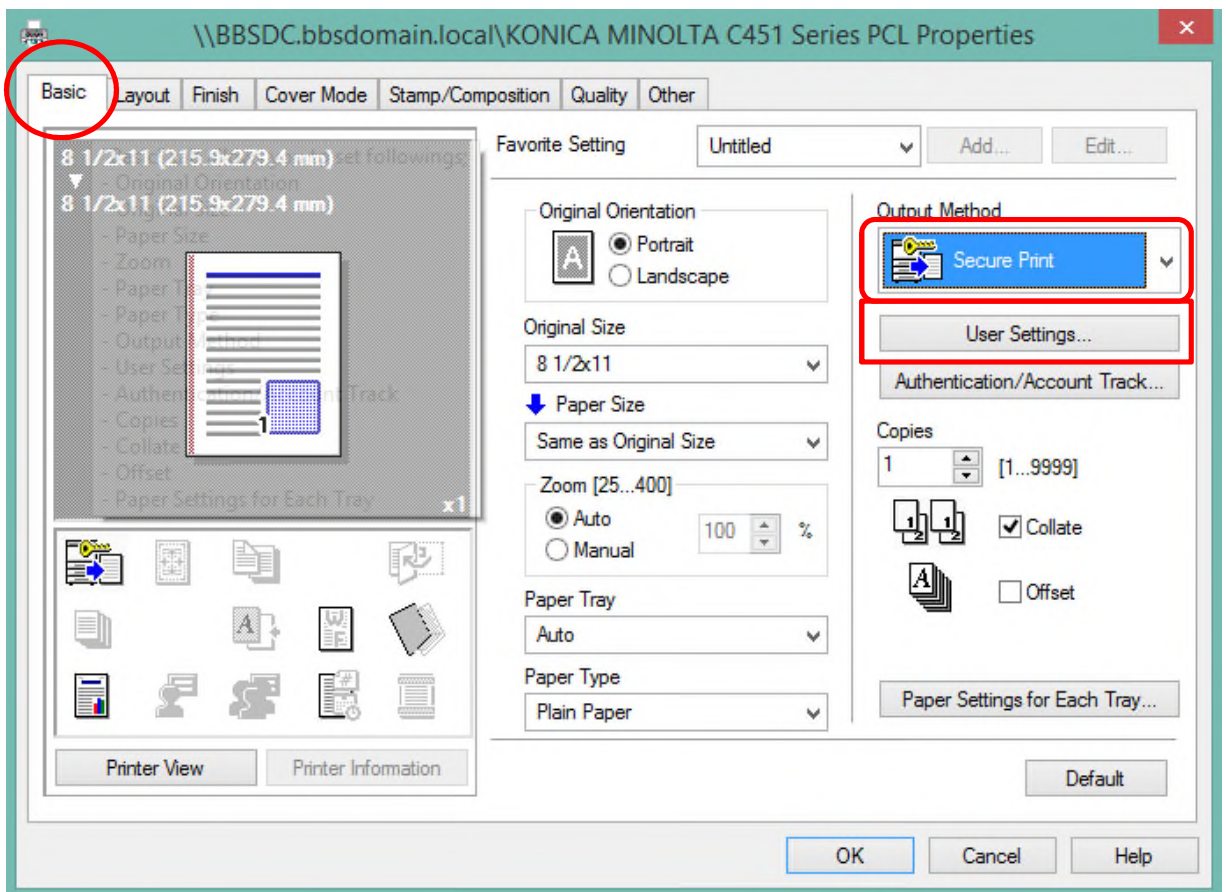
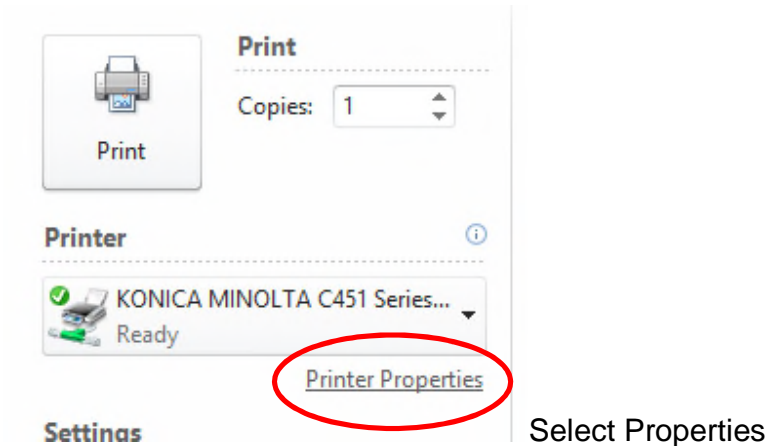




# Konica Secure Print




On the Basic tab select the Print dropdown, change to Secure Print. Select User Settings to assign a document ID and password.

User Settings ×

Secure Print

Secure Print ID  
12345678 Max. 16

Password  
•••••••• Max. 8

 Operate the followings on the printer's control panel in order to use the documents which is printed by "secure print".

[User Box] -> [System User Box] -> [Secure Print]

Fill in the Secure Print ID and password. I recommend a 4 digit number for both.