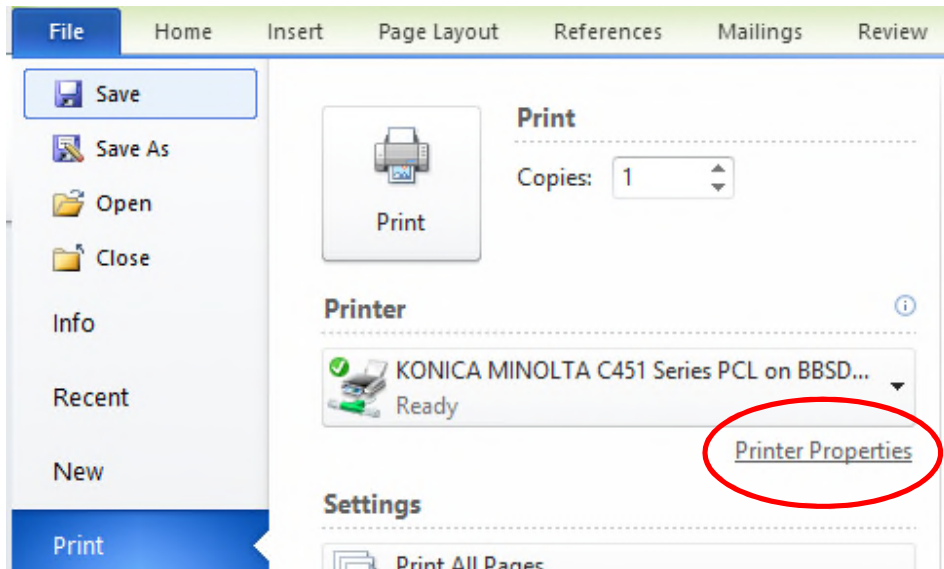
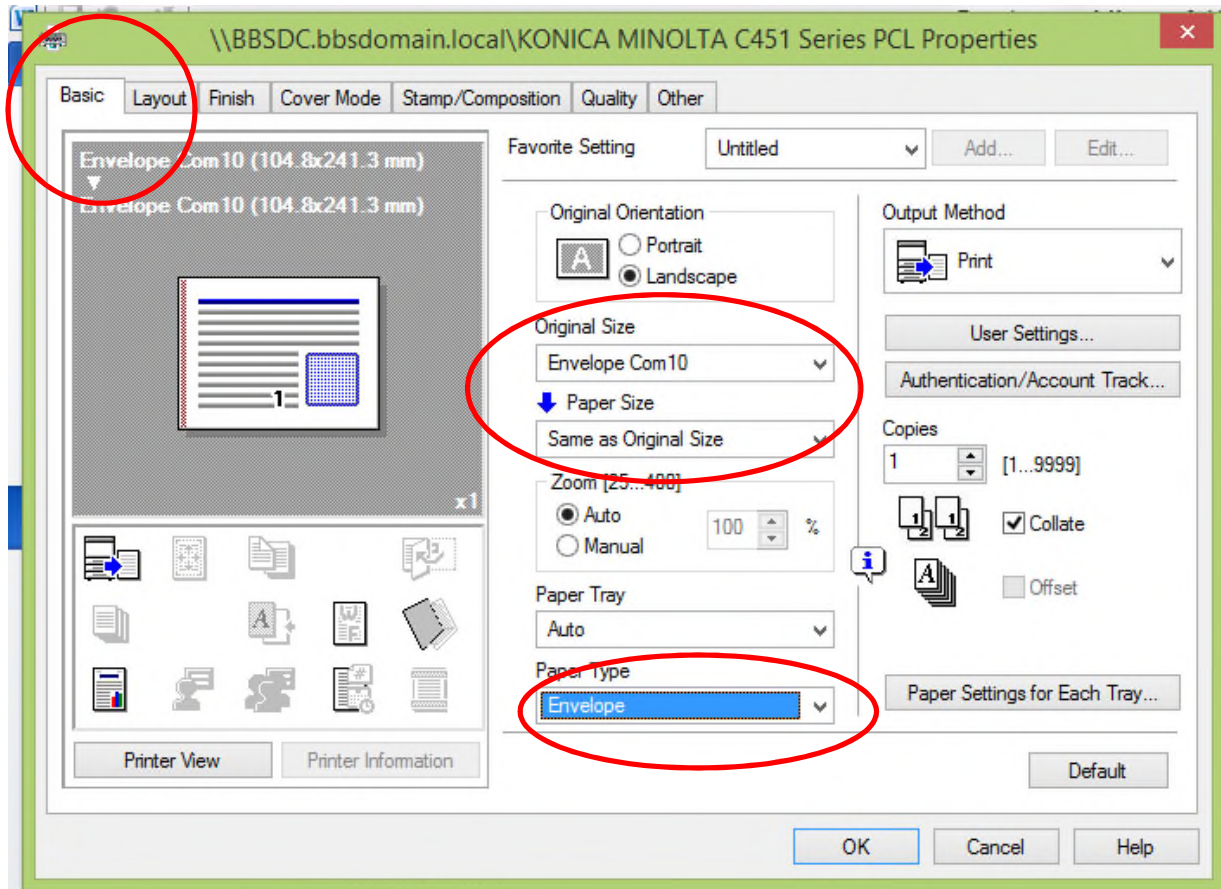


# Konica Envelope Printing

Use the separate preformatted page for envelopes. You are able to continue to enter down to add additional envelopes if you are sending more than one. Do not place the envelopes in the bypass tray until you have selected print. Please let the print driver tell the machine what to expect. The machine will hold the job until you place the envelopes in the bypass tray. Once it sees it there, it will start printing without you having to press anything.





See below for envelope placement in the bypass tray.

