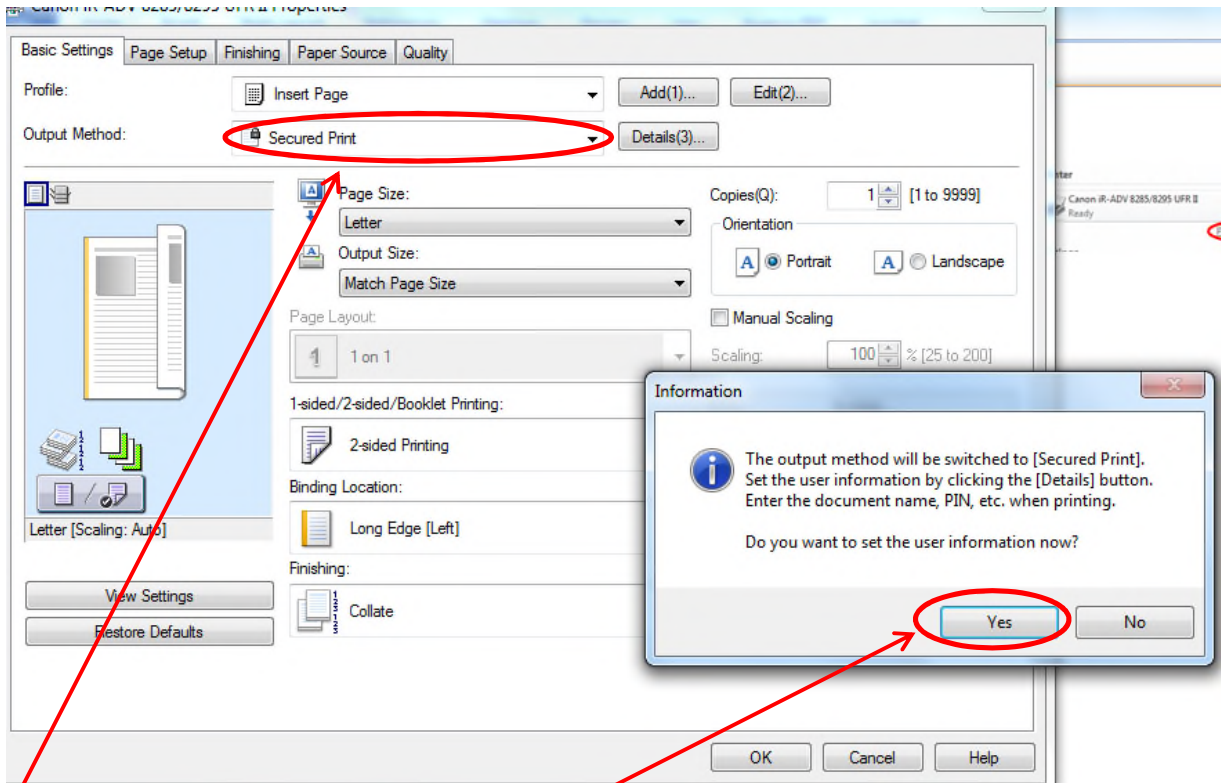


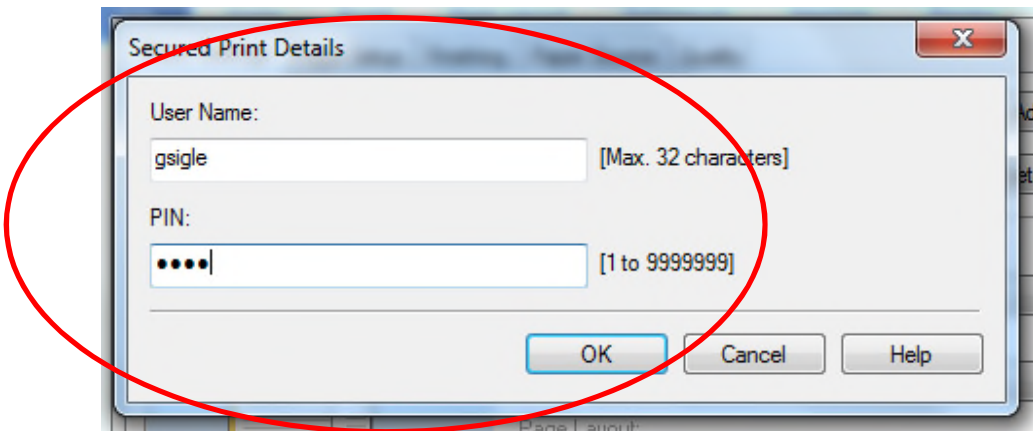
Canon Secure Print



Select Printer Properties.



Select Secure Print from the Output Method. You will get a pop up, select yes.



The above pop-up will now appear. You can assign a user name and pin. The pin should be all numbers. Select OK when you are finished.

Select OK then select print. When you walk over to the Canon you will select Secure Print from the main screen. If it does not show the icon select Show All from the top right of the screen. You will then highlight the ones you would like to print and you will be prompted for your password.